

Sprayer PRO MOST

PROFESSIONAL TECHNICAL SPRAYERS



360° SYSTEM

spray action from any position



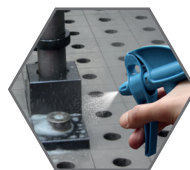
FPM SEALS

high chemical resistance
support constant operation



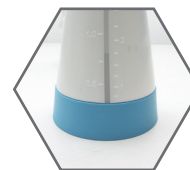
BASE RING

stabilize and protect the tank
from mechanical damages



ADJUSTABLE NOZZLE

regulate the spray
application from mist to
continuous stream



LIQUID LEVEL INDICATOR

use the transparent scale
and control liquid level
in the tank

Sprayer PRO 360 0,5 L MOST

Application:

- for easy spraying of MOST anti-spatter liquids.

Catalogue No.: 84 12 100011

NEW
in offer



SUPER DOUBLE ACTION™

application when the
pump layer is pressed
and released

Sprayer PRO 360 1 L PUMP MOST

Application:

- spraying of MOST anti-spatter and cleaning liquids,
- steel protection in CNC cutting process,
- maintenance of welding tables,
- cleaning machines and equipment.

Catalogue No.: 84 12 100014

NEW
in offer



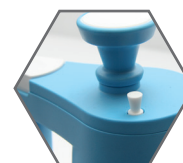
CONVENIENT HANDLE

work comfortably even
with welding gloves



SAFETY VALVE

pressure always
under control



ADJUSTABLE ENDING

get to the
hard-to-reach places

