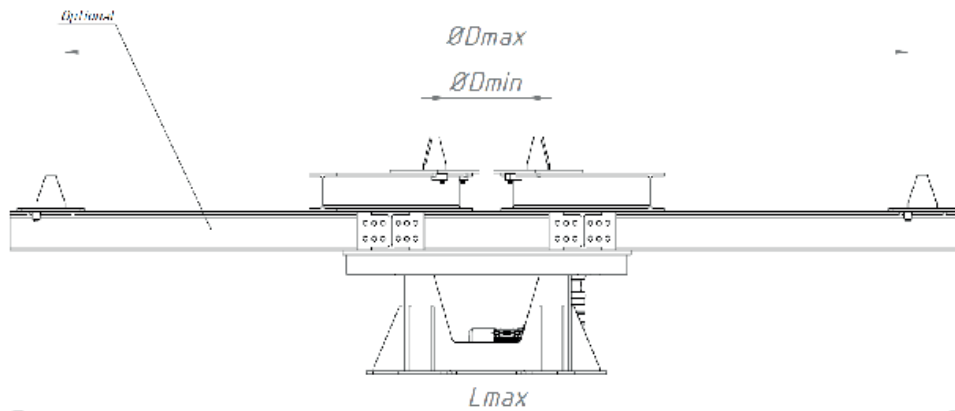
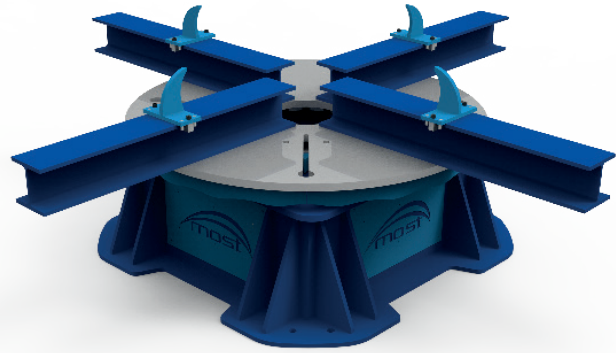
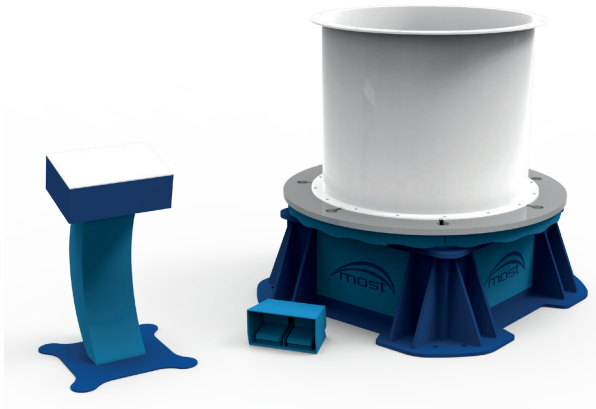
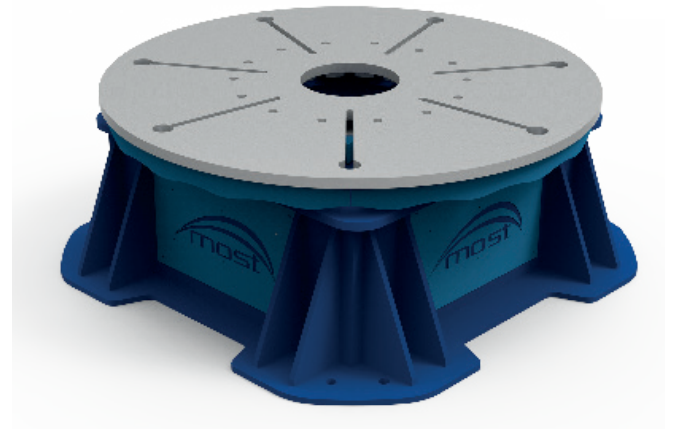


MOST MTT turntables



Rotary turntables (horizontal positioners) series MOST MTT are dedicated for precise positioning of cylindrical objects in flat or horizontal position. Primarily designed to handle applications that feature large diameter or low rigidity. The assembly in vertical position simplifies operation and eliminates the necessity of additional equipment. Inverter-controlled AC-driven rotations are smooth and accurate in all loading conditions. Positioners with maximum loading capacity up to 5000 kg.

- Positioners are equipped with:
- Adjustable rotation speed,
- remote controller with 10 meter cable,
- digital speed indicator on the controller panel for monitoring rotation,
- motors with brake and forced fan cooling.



Model	Rated load capacity [t]	Table diameter [mm]	Voltage [V]	Rotation motor power [kW]	Table rotation speed [min/max-rpm]		Diameter with additional equipment [mm]		Length overall	Length overall with additional equipment	Height overall	Weight [kg]
					Min.	Max.	Min.	Max.	L	Lmax	H	
MTT-5	5	1200	400	0,55	0,005	0,25	650	4000	1200	4300	600	2000
MTT-10	10	1500	400	0,55	0,005	0,25	650	4500	1500	4800	650	2750
MTT-25	25	1800	400	0,75	0,005	0,25	650	4500	1800	4800	680	3700
MTT-50	50	2000	400	1,1	0,005	0,25	650	4000	2000	4300	700	4100