

L type positioner MOST MLP

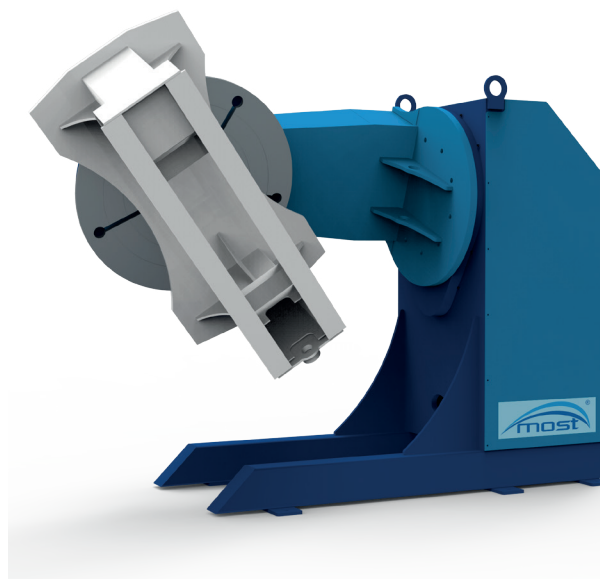
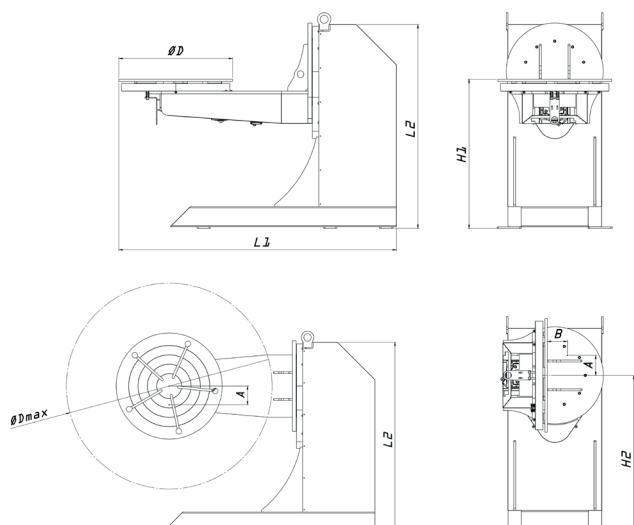
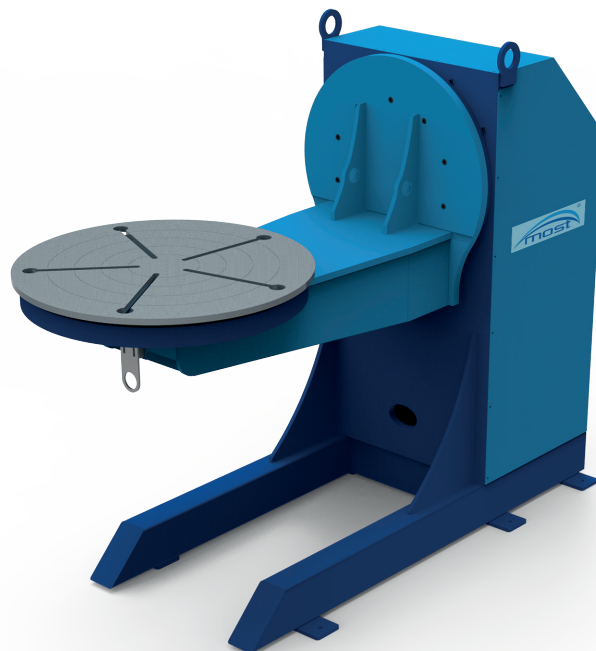


In welding work, positioners are convenient aids in increasing working flexibility, productivity and quality, not to mention labor motivation. Flexible to move work to any suitable position, what allow work-pieces to be set up to the best possible down-hand welding positions.

Positioners MOST series MLP are dedicated for heavy work-pieces with demanding product geometry. Work-pieces can be adjusted in all conceivable positions with MLP positioner. This ensures that the welder's working posture is always productive and ergonomically sound. Inverter-controlled AC-driven rotations are smooth and accurate in all loading conditions. Positioners with loading capacity up to 3000 kg (other various capacities available upon request).

Positioners are equipped with:

- adjustable steeples rotation speed of table and tilt movement,
- remote controller with 5 meter cable,
- digital speed indicator on the controller panel for monitoring rotation,
- motors with brake and forced fan cooling.



Model	Rated load capacity [t]	Table rotation degree [°]	T-Slots [°]	Voltage [V]	Table motor power [kW]	Tilt rotation motor [kW]	Table rotation speed		Height of table center to the floor [mm]		Work-piece diameter	Width overall	Height overall	Weight [kg]
							Min.	Max.	H1	H2	D max	L1	L2	
							[min/max-rpm]	[mm]	[mm]	[mm]	[mm]	[mm]		
MLP-05	0,5	360	+90 /-90	400	0,37	0,37	0,15	1,5	800	900	1400	1830	1155	550
MLP-1	1	360	+90 /-90	400	0,55	0,75	0,14	1,4	1120	1180	1650	2300	1520	950
MLP-3	3	360	+90 /-90	400	1,5	1,5	0,1	1	1200	1360	1850	2580	1717	1750