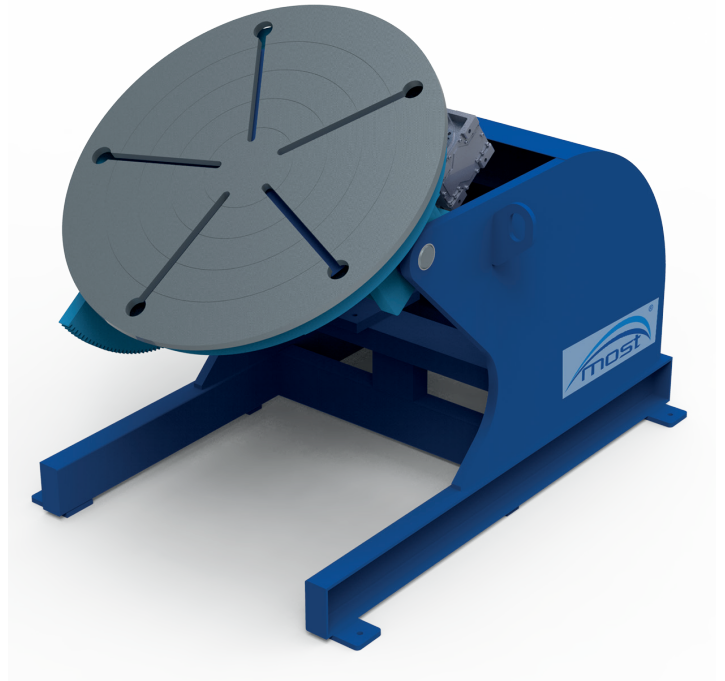


Conventional positioner MOST MCP



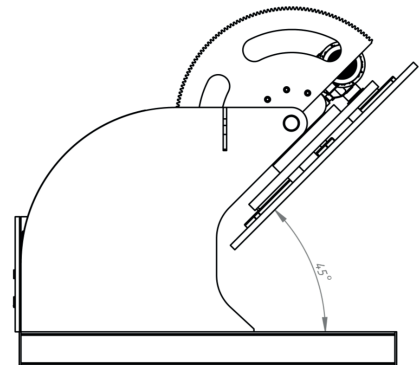
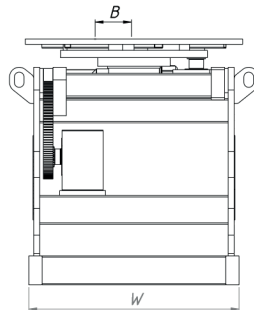
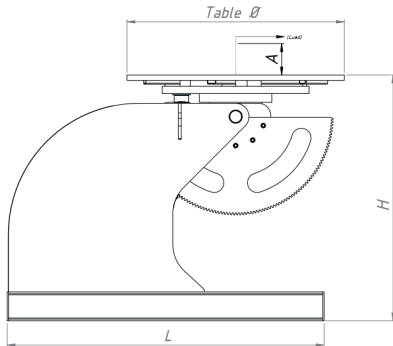
In welding work, positioners are convenient aids in increasing working flexibility, productivity and quality, not to mention labor motivation. Flexible to move work to any suitable position, what allow work-pieces to be set up to the best possible down-hand welding positions.

Positioners MOST series MCP provide safe positioning of the work-piece into optimal position for any of the technical operations such as welding. Ensure ideal, ergonomic working positions, also increase welding productivity and quality. Positioners are equipped with adjustable regulation and tilting movement functions. Inverter-controlled AC-driven rotations are smooth and accurate in all loading conditions. Positioners with loading capacity up to 5000 kg (other various capacities available upon request).



Positioners are equipped with:

- Adjustable rotation speed,
- angle indicator (for tilting movement),
- remote controller with 5 meter cable,
- digital speed indicator on the controller panel for monitoring rotation,
- motors with brake and forced fan cooling.



Model	Rated load capacity [t]	Rotation torque [kgm]	Tilting moment [kgm]	Table rotation degree [°]	T-Slots [°]	Voltage [V]	Rotation motor power [kW]	Tilt rotation motor [kW]	Rotation speed		Tilting speed [s]	Table diameter [mm]	Tilting range	Length overall			Height overall [mm]	Width overall		Current-carrying capacity [A]
									[min/max-rpm]					L [mm]	H [mm]	W [mm]		Weight [kg]		
									Min.	Max.										
MCP-02	0,2	300	150	360	180	380	0,25	0,25	0,14	1,4	30	600	6	1275	1050	750	300	300	300	
MCP-05	0,5	300	150	360	135	380	0,37	0,55	0,14	1,4	30	700	6	1100	800	840	600	600	300	
MCP-1	1	300	150	360	135	380	0,37	0,75	0,14	1,4	30	850	6	1310	880	1030	900	900	300	
MCP-2	2	300	600	360	135	380	0,75	1,1	0,14	1,4	45	900	6	1510	1010	1210	1200	1200	300	
MCP-3	3	450	900	360	135	380	1,1	2,2	0,14	1,4	45	1100	6	1610	1250	1310	1650	1650	300	
MCP-5	5	750	2400	360	135	380	1,5	2,2	0,14	1,4	45	1200	6	1800	1200	1540	2500	2500	300	